

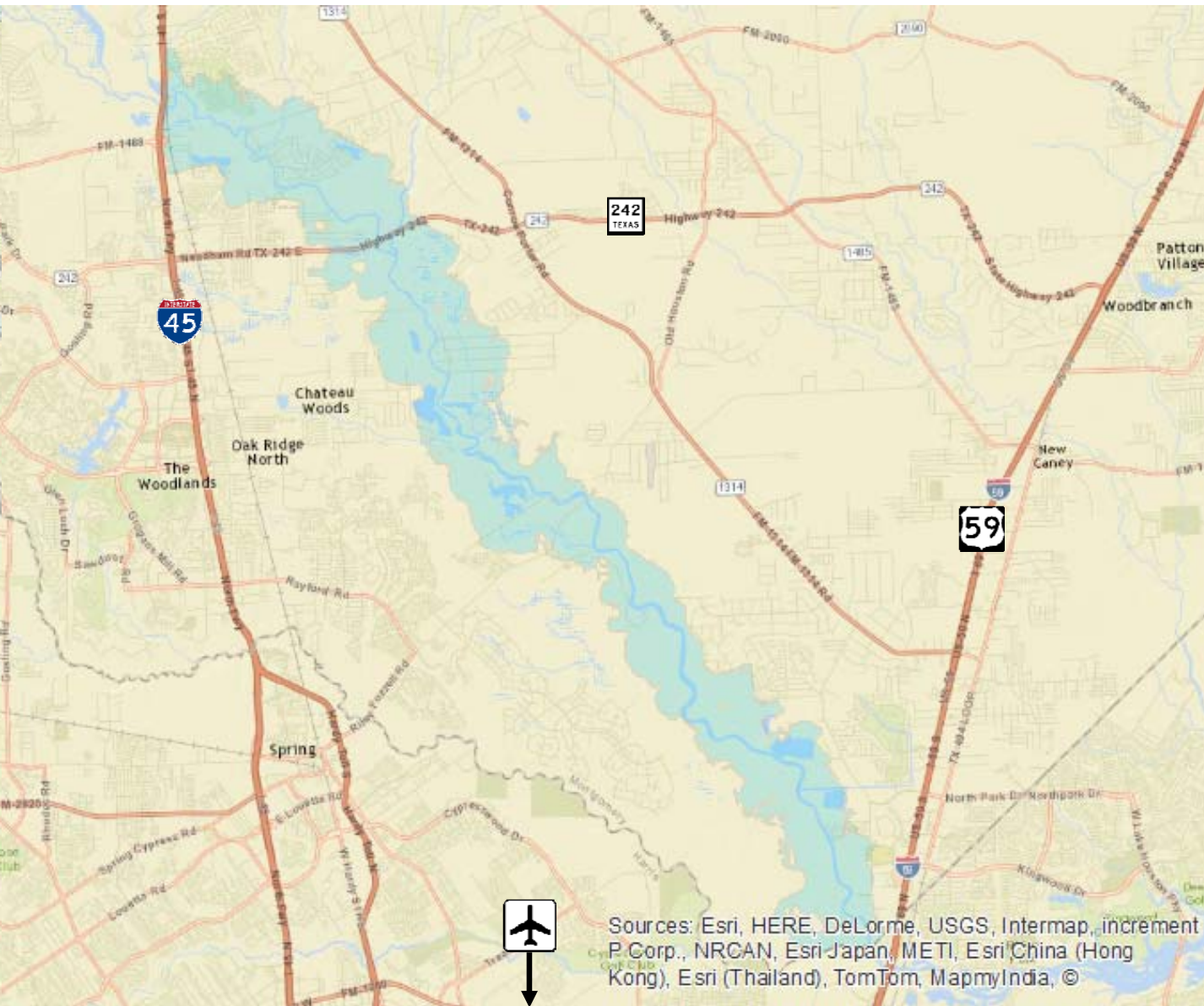
SAND AND GRAVEL IMPACT ANALYSIS

WEST FORK OF THE SAN JACINTO RIVER

1995 - 2017

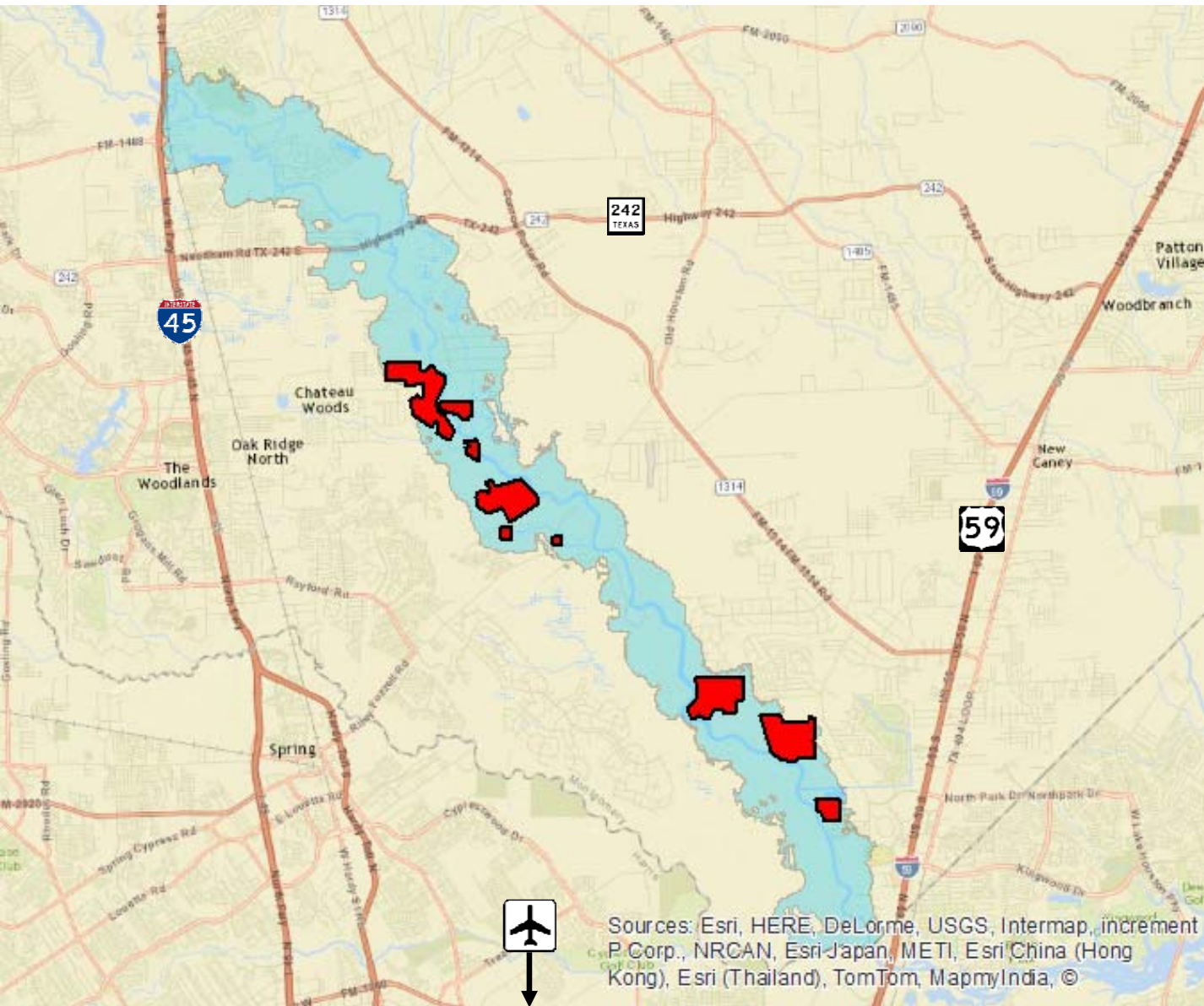
BAYOU LAND CONSERVANCY
JULY 26, 2018





Area of Floodplain Examined:
17,742 acres





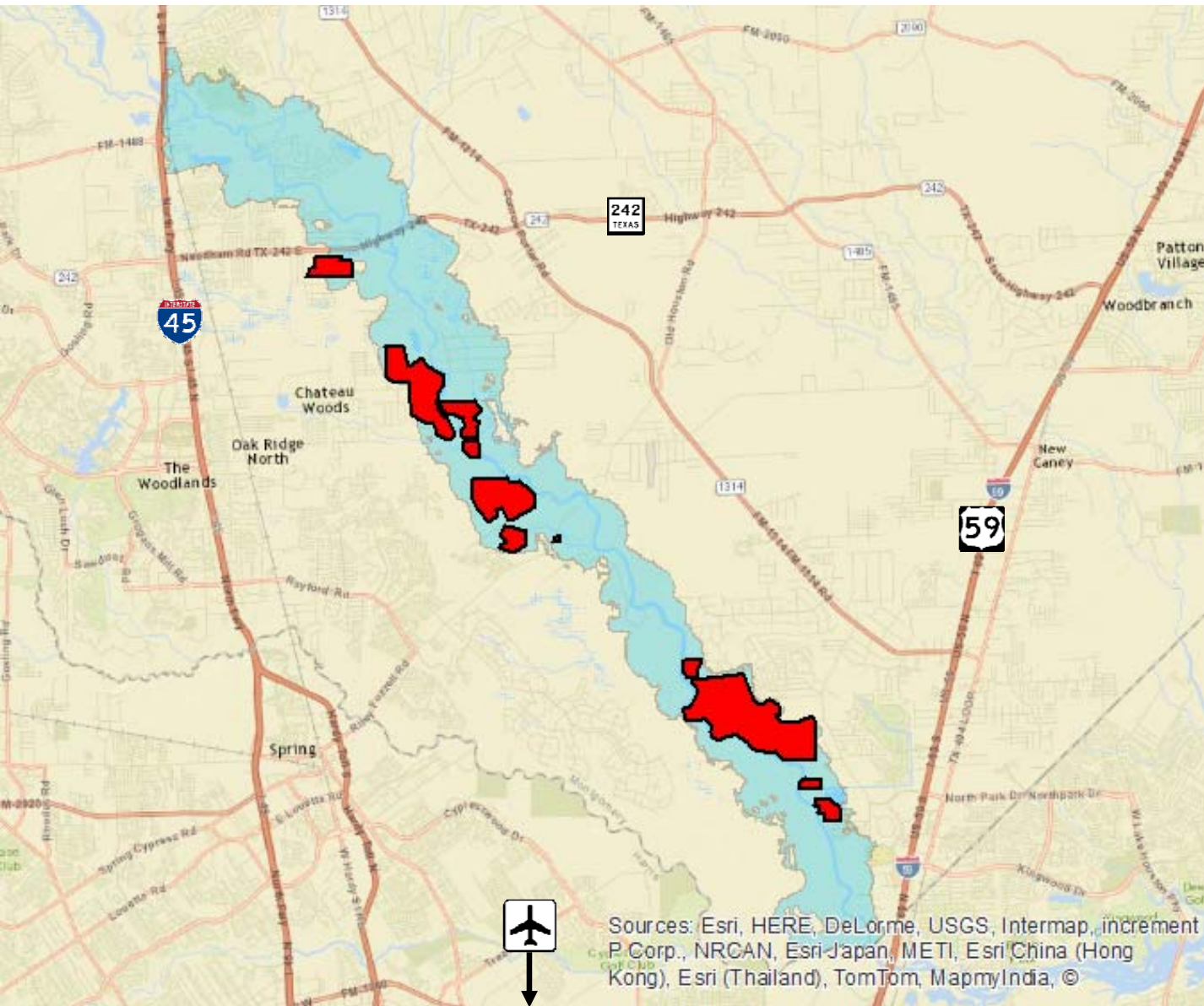
1995

Impact:

7.38%

1,308 acres

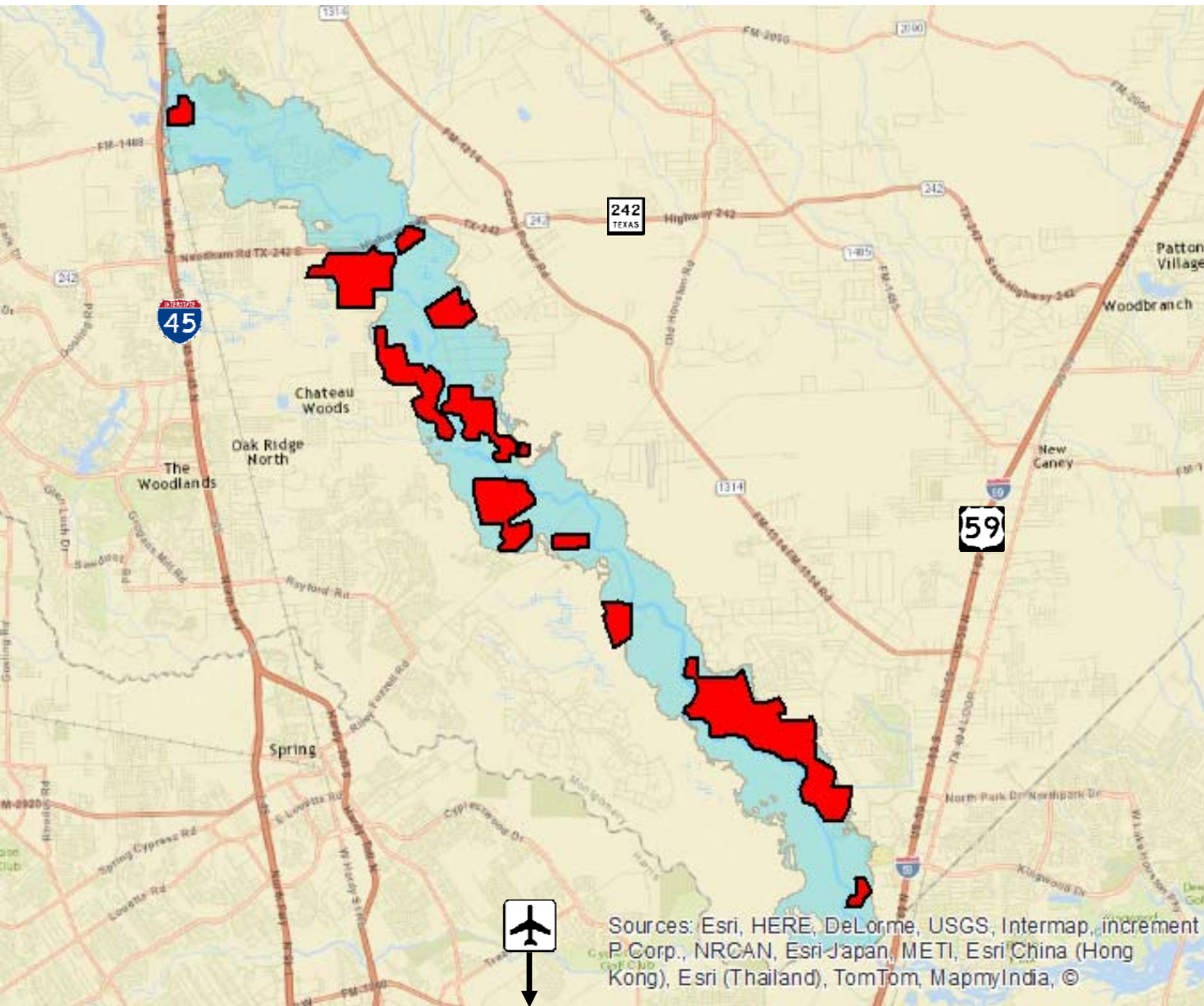




2000

Impact:
12.68%
2,249 acres





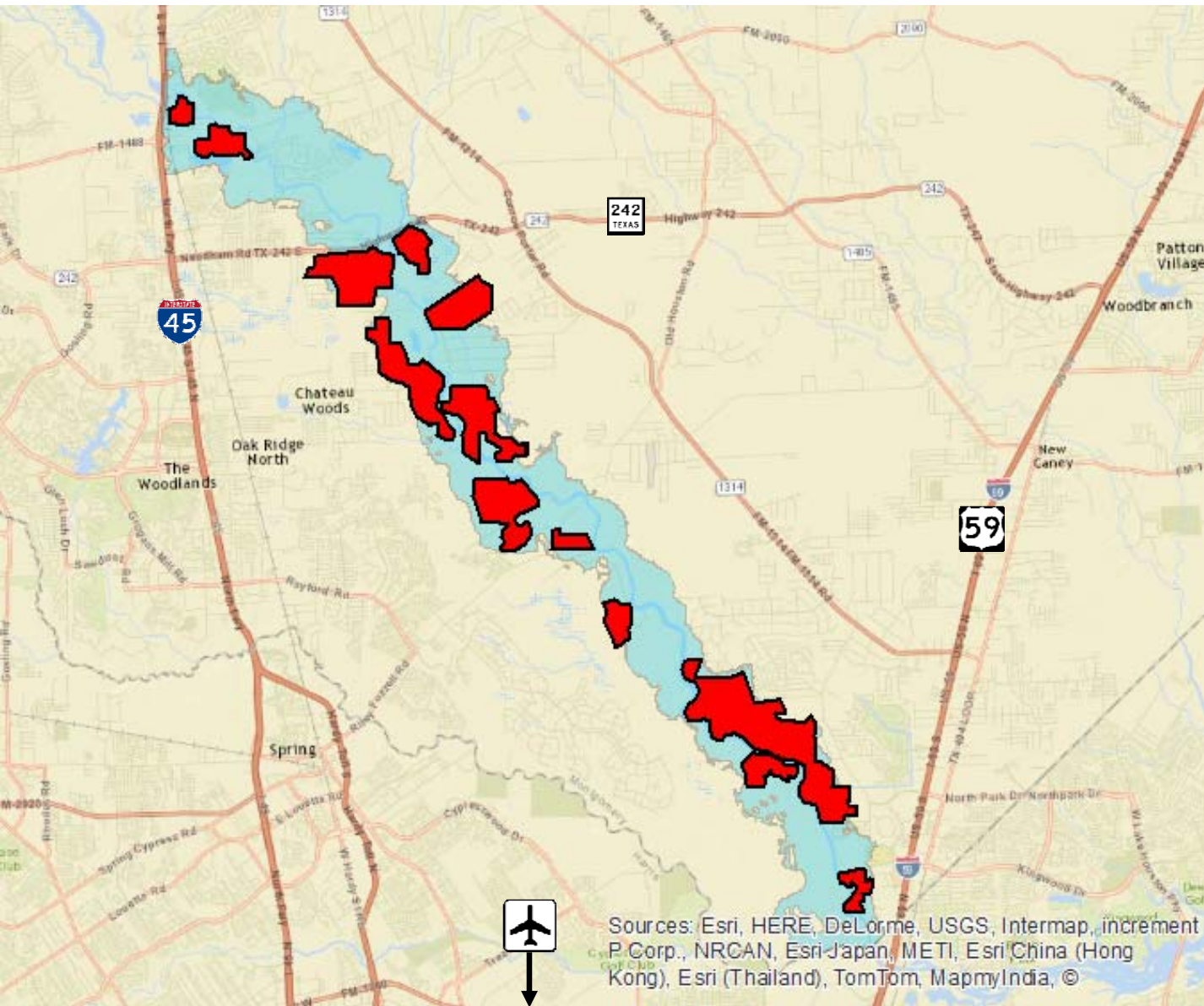
2010

Impact:

19.67%

3,489 acres

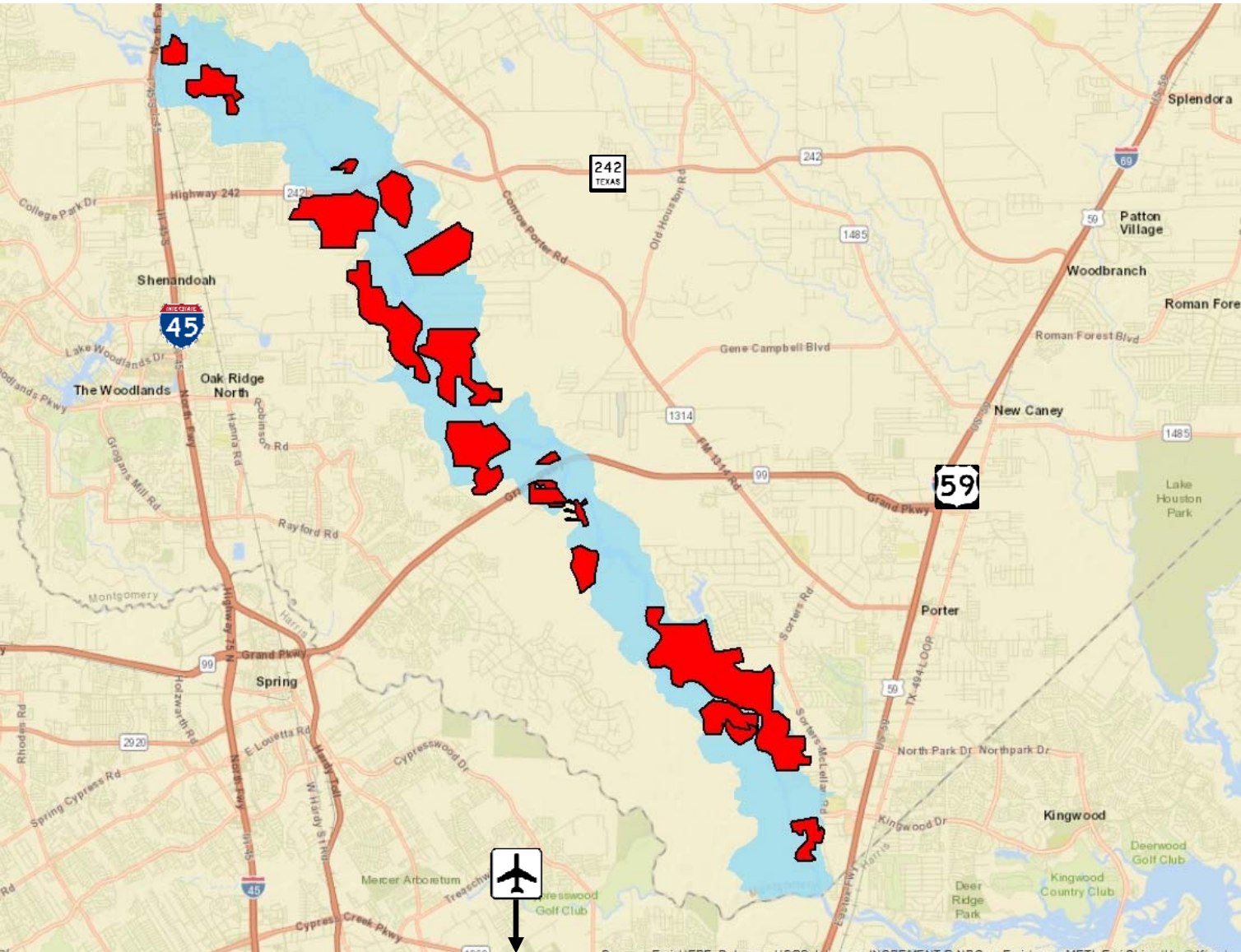




2014

Impact:
25.36%
4,499 acres

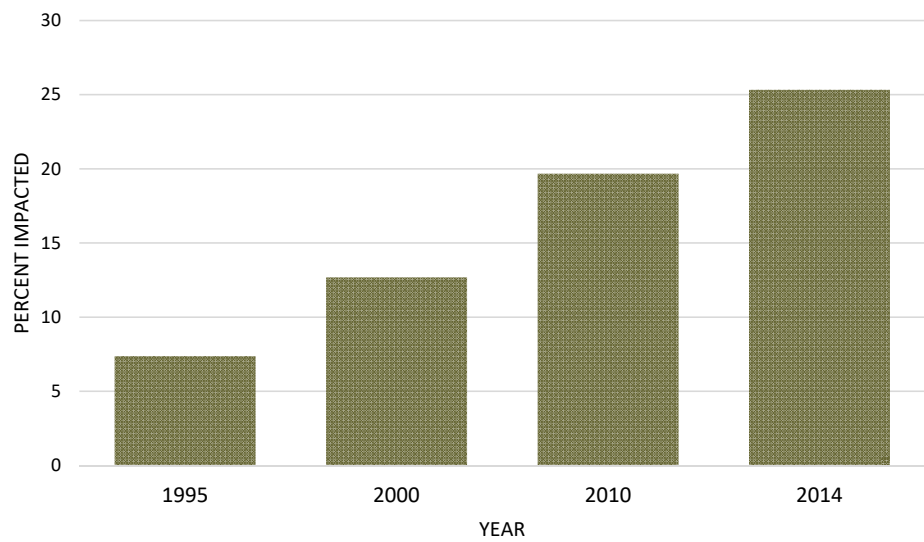




2017

Impact:
30.98%
5,496 acres

Montgomery County Floodplain Percentage Impact



Montgomery County Floodplain Acreage Impact

